



FLOOR PLAN

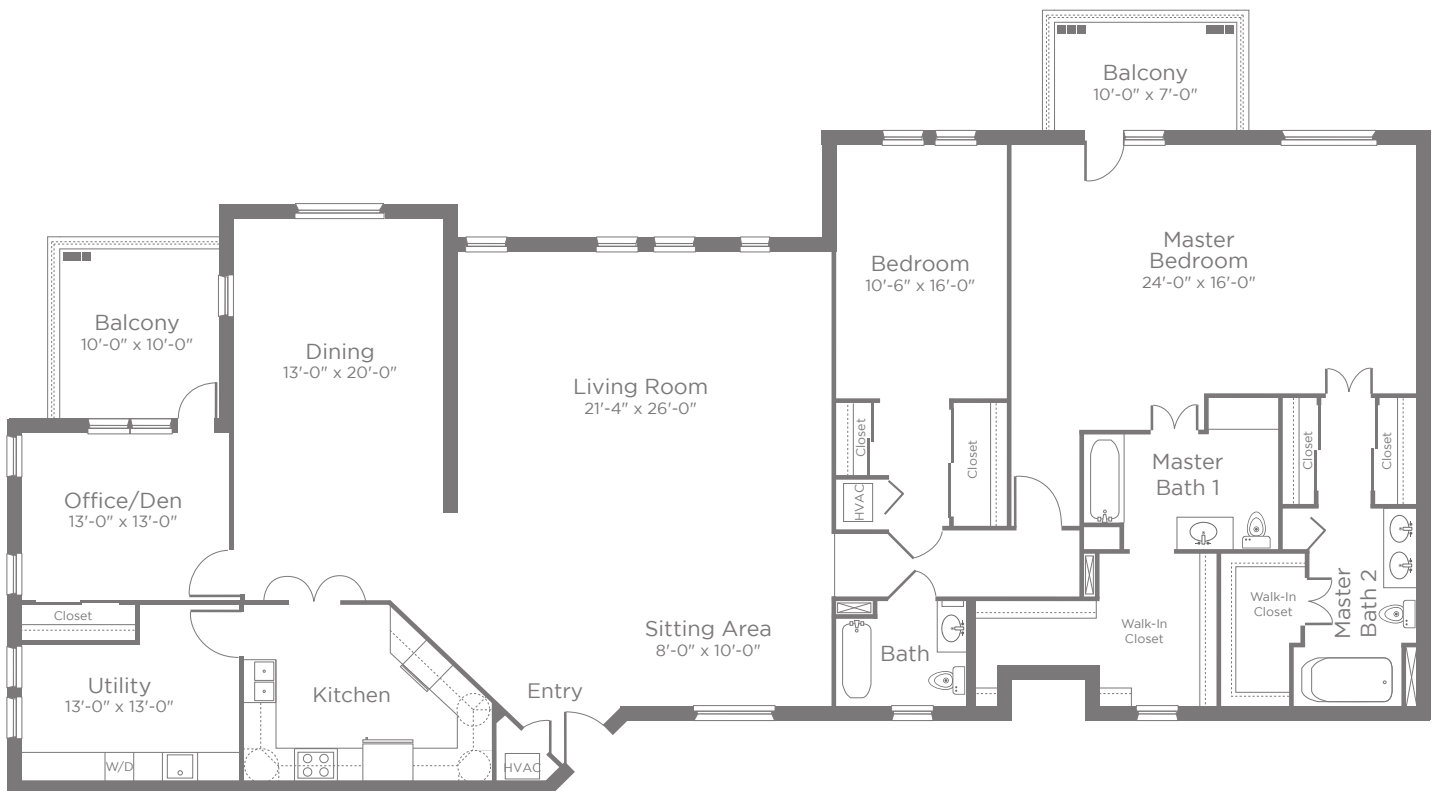
INDEPENDENT LIVING APARTMENT HOMES

PENTHOUSE

2 Bedroom | 3 Bath | Den

Approximately 2,600 sf

Notes



Actual room dimensions may vary slightly.



FEATURES

INDEPENDENT LIVING APARTMENT HOMES

LIFESTYLE INTERIORS

- Enhanced architectural styling
- Wood paint grade baseboards and door casings
- Crown moulding in living room
- Your choice of two flooring palettes:
 - Masland® quality carpet in bedrooms
 - Luxury vinyl wood plank in living areas
- 24" Carrara-style porcelain tile in entry, kitchen and bathrooms
- Six-panel interior doors with Schlage® lever handles
- Designer selected light fixtures with Decora® switches
- Decorator plumbing fixtures
- Lifeline emergency call system

YOUR MASTER BEDROOM

- Elegant master bedroom with private bath
- Organizer closet interiors with modular shelf and hang systems
- Ceramic tile shower surround with glass tile accent
- Integrity™ lighted vanity mirror

YOUR DESIGNER KITCHEN

- GE® appliances include white or stainless steel package, including; microwave, four burner stove, refrigerator with ice-maker and dishwasher
- Granite countertops
- Full height designer-selected cabinetry
- 24" Carrara-style tile flooring
- InSinkErator® ¼ HP disposal (not heavy duty)
- Dual compartment stainless steel sink
- Premier single-lever spray faucet

ENVIRONMENTAL ADVANTAGES

- Double-paned windows
- Forced air heating and air conditioning with programmable set back thermostat
- Water-saving plumbing fixtures
- Fully insulated walls
- Energy-efficient fluorescent lighting
- Private patio / balcony, open or screened - your choice

Notes

Kisco Senior Living reserves the right to change pricing, delete or modify floor plans and specifications without notice or obligation. All square footage is approximate. 